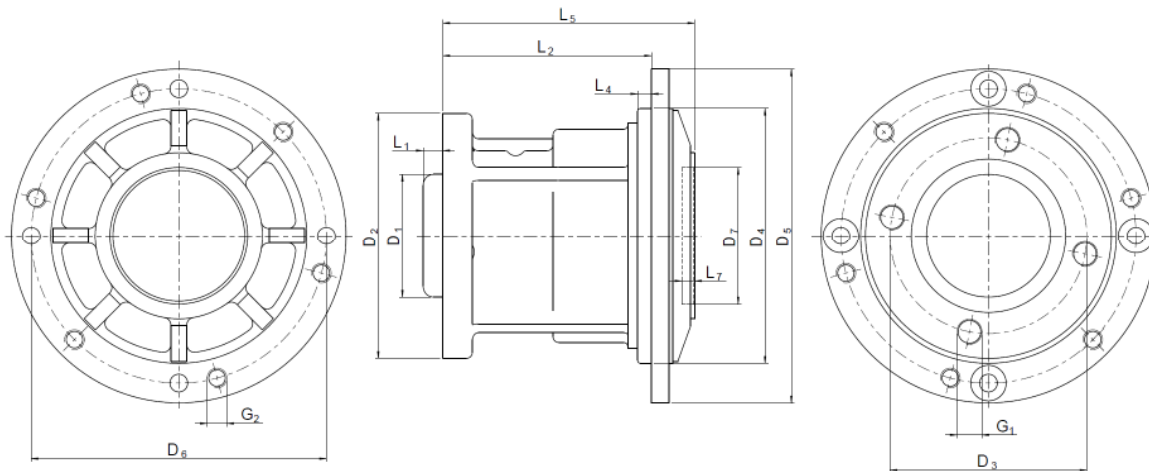


# Datasheet PGR 500 PGR 1500

		PGR 500			PGR 1500			[kg]
		1	2	3	1	2	3	
Wheel load		700			2100			
Stages		1	2	3	1	2	3	
Transmission Ratio <sup>7</sup>	i	4 <sup>9</sup> 7	16 <sup>9</sup> 24 <sup>9</sup> 42	96 <sup>9</sup> 144 <sup>9</sup> 252 <sup>9</sup> 504	5 <sup>9</sup> 8	25 <sup>9</sup> 40 <sup>9</sup> 64	100 <sup>9</sup> 150 <sup>9</sup> 240 <sup>9</sup> 384	
Efficiency	η	96	94	93	96	94	93	[%]
Weight	m	6,9	7,3	8,4	14	15,5	17,5	[kg]
Rated output torque	T <sub>2N</sub>	160			800			[Nm]
Output acceleration torque	T <sub>2A</sub>	450			1600			[Nm]
Peak output torque <sup>1</sup>	T <sub>2S</sub>	500			2000			[Nm]
Rated input speed <sup>2</sup>	n <sub>1N</sub>	3000			3000			[min <sup>-1</sup> ]
Max. input speed <sup>3</sup>	n <sub>1 max</sub>	6000			6000			[min <sup>-1</sup> ]
Axial force <sup>4</sup>	F <sub>2A max</sub>	2500			5000			[N]
Radial force <sup>4</sup>	F <sub>2R max</sub>	7000			21000			[N]
Operating life <sup>5,6</sup>	Lh	20000			20000			[h]
Operating noise at n <sub>1</sub> = 3000 min <sup>-1</sup>	Lp	<65			<68			[dB(A)]
Sense of rotation (transmission i/o)		in opposite direction						
Lubrication		lubricated for life						
Mounting position		horizontal						
Ambient temperature	T	-20 to +50						[°C]
Permissible case temperature max.	T	90						[°C]
Protection class		up to IP67 – depending on the motor						
Casting protection		EDP-coated						
Colour <sup>7</sup>		similar RAL 9005						

1	permitted no more than 1000 times	5	referenced to n <sub>2</sub> =100 min <sup>-1</sup> , KA=1	8	motor dependent
2	at 20°C ambient temperature	6	application dependent	9	de clutch option
3	short-time duty	7	others on request		
4	with regard to the flange area of the rim at n <sub>2</sub> =100 min <sup>-1</sup>				



		PGR 500			PGR 1500		
		1	2	3	1	2	3
Stages		1	2	3	1	2	3
Dimensions							
Overall length - without motor	L5	128	155		169	200	
Casting length	L2	105			138		
Transmission Output Shaft Dimensions							
Rim disc mounting diameter	D1	63 / 63			80 / 85		
Rim centring length	L1	10			10		
Output flange - outer diameter	D2	128			158		
Rim pitch circle diameter	D3	100			130		
Rim screw thread	G1	M12x1,5 (4x)			M14x1,5 (4x)		
Transmission Input Shaft Dimensions <sup>8</sup>							
Gear disc mounting diameter	D4	130			160		
Gear centring length	L4	5			5		
Outer diameter	D5	170			200		
Pitch circle diameter	D6	150	60		180	150	
Screw thread	G2	M10 (6x)	M6 (4x)		M10 (8x)		
Motor disc mounting diameter	D7	70	50		100	70	
Motor centring length	L7	5,5	4,5		5,5		
Motor shaft precision	--	DIN 42955-N					

Allweier Systeme GmbH  
 Zum Degenhardt 3  
 88662 Überlingen  
 Tel: +49 7551 9207-250  
 Fax: +49 7551 9207-255  
 e-Mail: [post@as-gmbh.info](mailto:post@as-gmbh.info)  
 Internet: [www.allweier.com](http://www.allweier.com)